

Reference Number: FOI202324/284
From: Private Individual
Date: 19 September 2023
Subject: Structure Chart for Finance & Accountancy, Procurement and Estates, Facilities and Capital Development

Q1 Please could you provide a structure chart for the following departments, including job titles and staff member names where possible;

- a. Finance & Accountancy
- b. Procurement
- c. Estates, Facilities and Capital Development

A1

- a. Please see attached document: *FOI284 Finance Structure*
- b. Procurement services are provided by Health Procurement Liverpool, a shared procurement service across four specialist organisations in Liverpool, which is led by The Walton Centre. Please contact them directly via wcfr.healthprocurementliverpool@nhs.net
- c. Please see attached document: *FOI284 Estates Reporting Structure_Redacted*

Please see attached document: *FOI284 Facilities Structure Chart*

Please see attached document: *FOI284 Capital Projects Structure Chart*

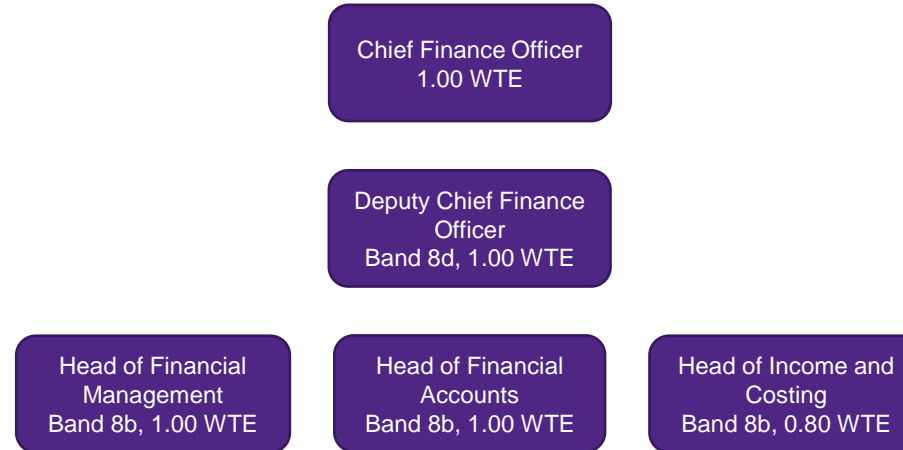
Staff names exempted under Section 40: Personal Information. Although the information relates to their public role and accountability for managing budgets, disclosure of names of all individuals may potentially have adverse consequences to the employees. Any names of staff that are available in the public domain are accessible via our website or previous FOI requests on our disclosure log.

<http://www.lhch.nhs.uk/>

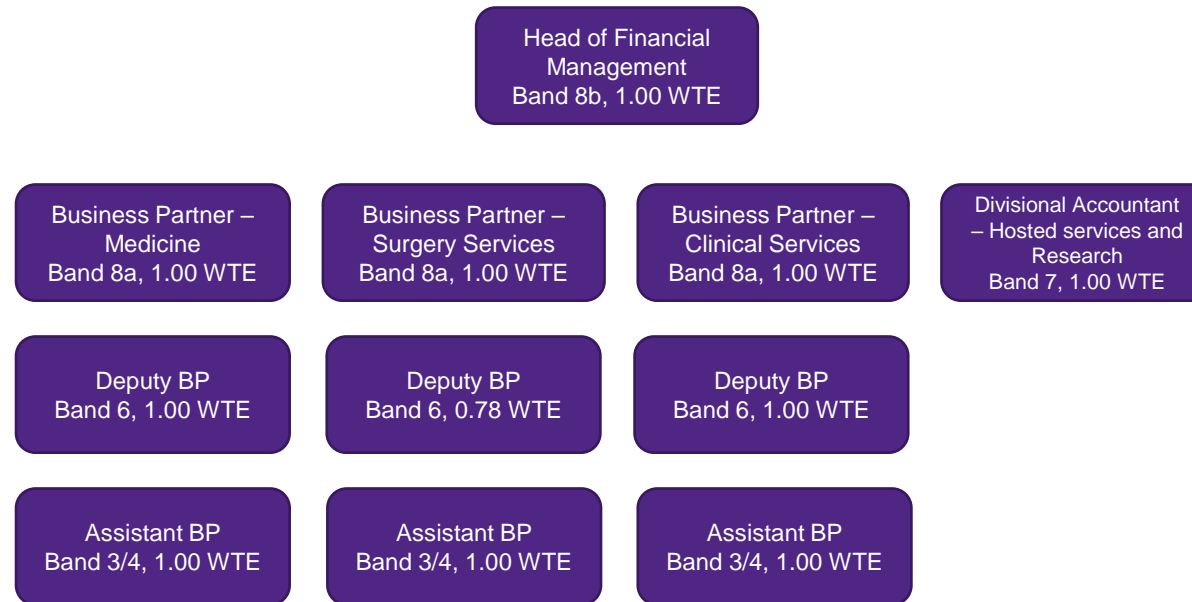
<https://www.lhch.nhs.uk/resources/disclosurelogs>

LHCH Finance Department

Overview – Substantive Structure



Financial Management – Substantive Structure



Financial Accounts and Income and Costing - Substantive



STRUCTURE

