

# Introducing our Council of Governors

Governors are an important link between our hospital and the communities that we serve. Our public Governors represent members from our catchment areas which includes Cheshire, Merseyside, North Wales, the Rest of England and Wales (which incorporates Lancashire). Staff Governors represent our staff and our

Nominated Governors represent those working within our Partner Organisations. Our Governors would like to hear from you. Please share your views with them and help shape the future of Liverpool Heart and Chest Hospital NHS Foundation Trust.

To contact your Governor or to find out more about membership please contact the membership office on 0151 600 1410 or emailing [membership.office@lhch.nhs.uk](mailto:membership.office@lhch.nhs.uk)



Val Davies  
Chair



Karan Wheatcroft  
Director of Risk and Improvement



Gill Donnelly  
Membership & Communications Officer

## Elected Public Constituency Governors

### Cheshire



Allan Pemberton



Ray Davis



Denis McAllister

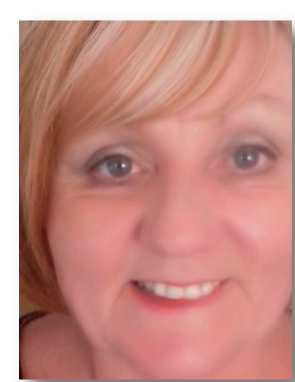


Vacant

### Merseyside



Terence Comerford



Elaine Holme



Peter Humphrey



Dorothy Burgess



David Bromilow



Trevor Wooding

### North Wales



Joan Burgen



Dusty Rhodes



Peter Wareham

### Rest of England & Wales



Lynne Addison

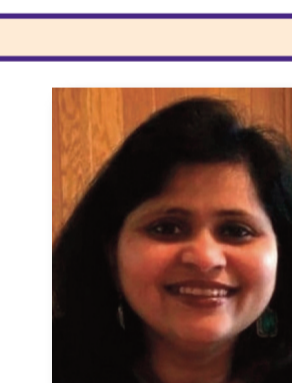
## Elected Staff Constituency Governors



Dorothy Price  
Allied Healthcare Professionals, Technical and Scientific



Megan Cromby  
Non Clinical Staff



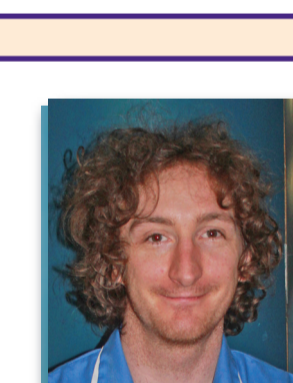
Princey Santhosh  
Registered and Non Registered Nurses



Dr Rebecca Dobson  
Registered Medical Practitioners



Rachael McDonald  
Non Clinical Staff



Charles Cowburn  
Registered and Non Registered Nurses



Sharon Faulkner  
Registered and Non Registered Nurses

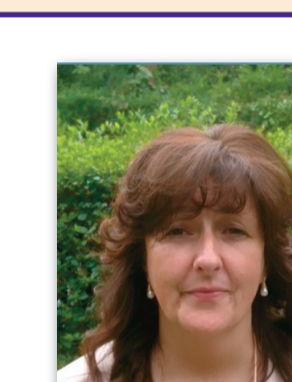
## Nominated Partner Organisations Governors



Sharon Connor  
Liverpool City Council



Karen Higginbotham  
Liverpool John Moores University



Wendy Caulfield  
Friends of Robert Owen House



Hollie Swann  
University of Liverpool

