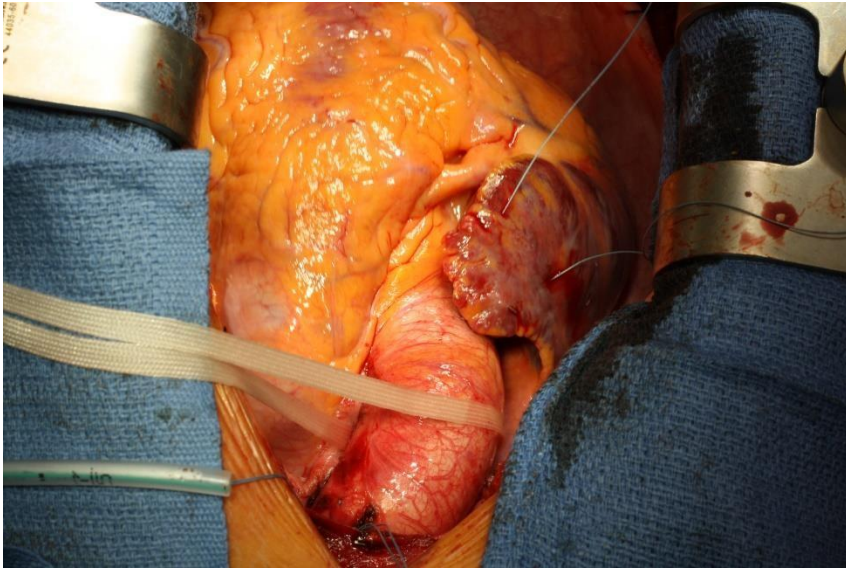


Picture board of David Valve Sparing Root

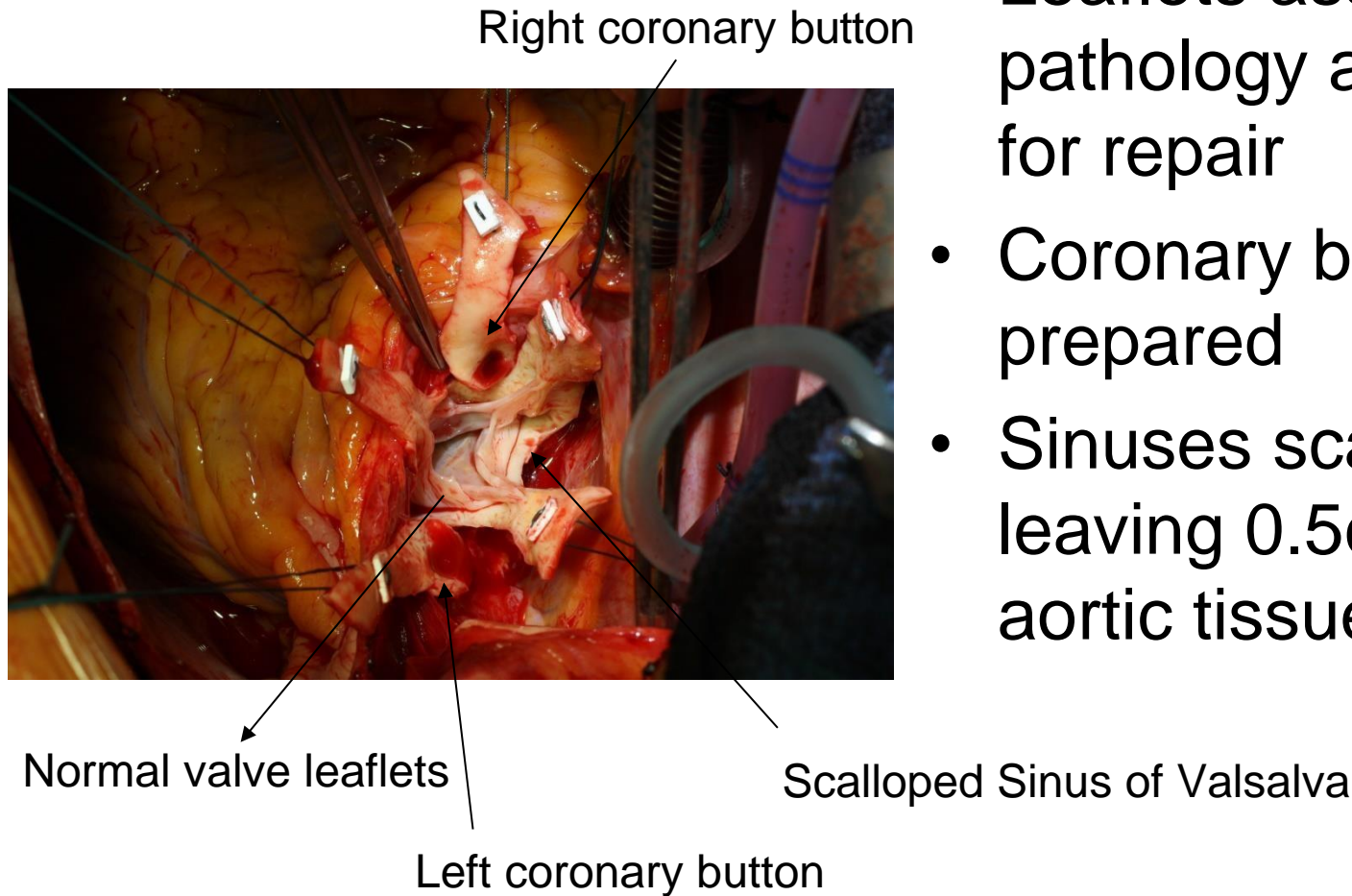
Typical Marfans root and ascending aorta



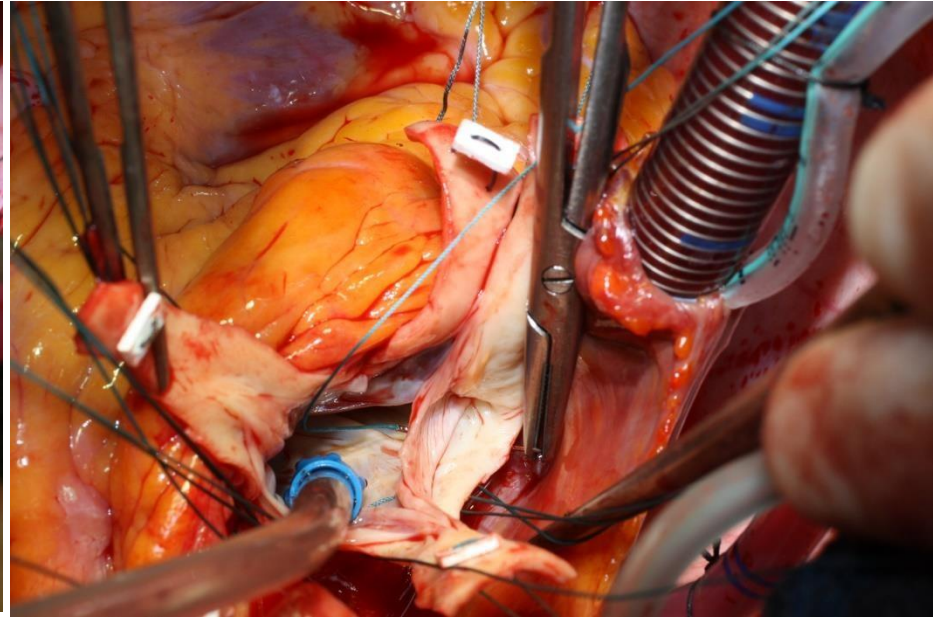
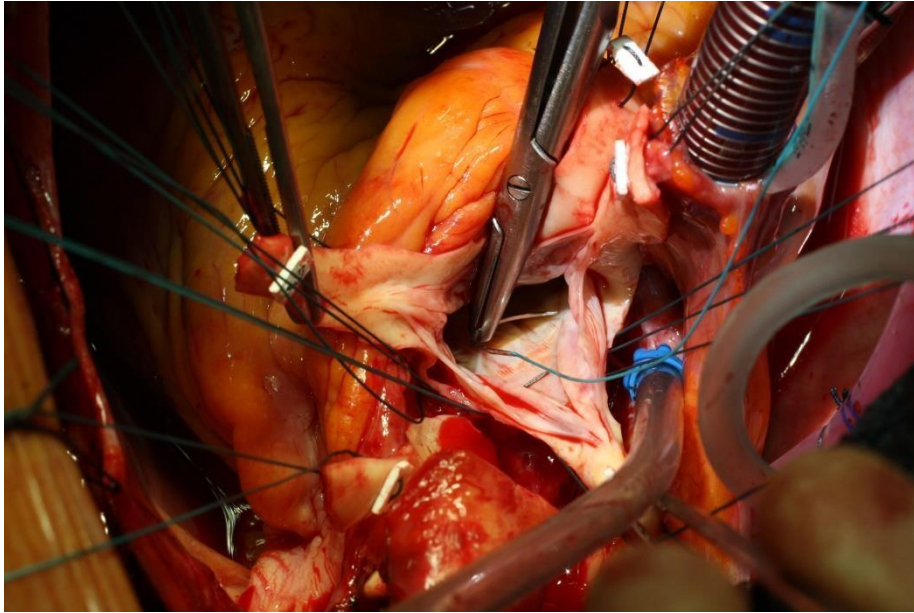
- Normal dimensions A Ao
- Dilated root
- AV function normal
- Arch cannulation
- Replacement root and A Ao

Preparation of root

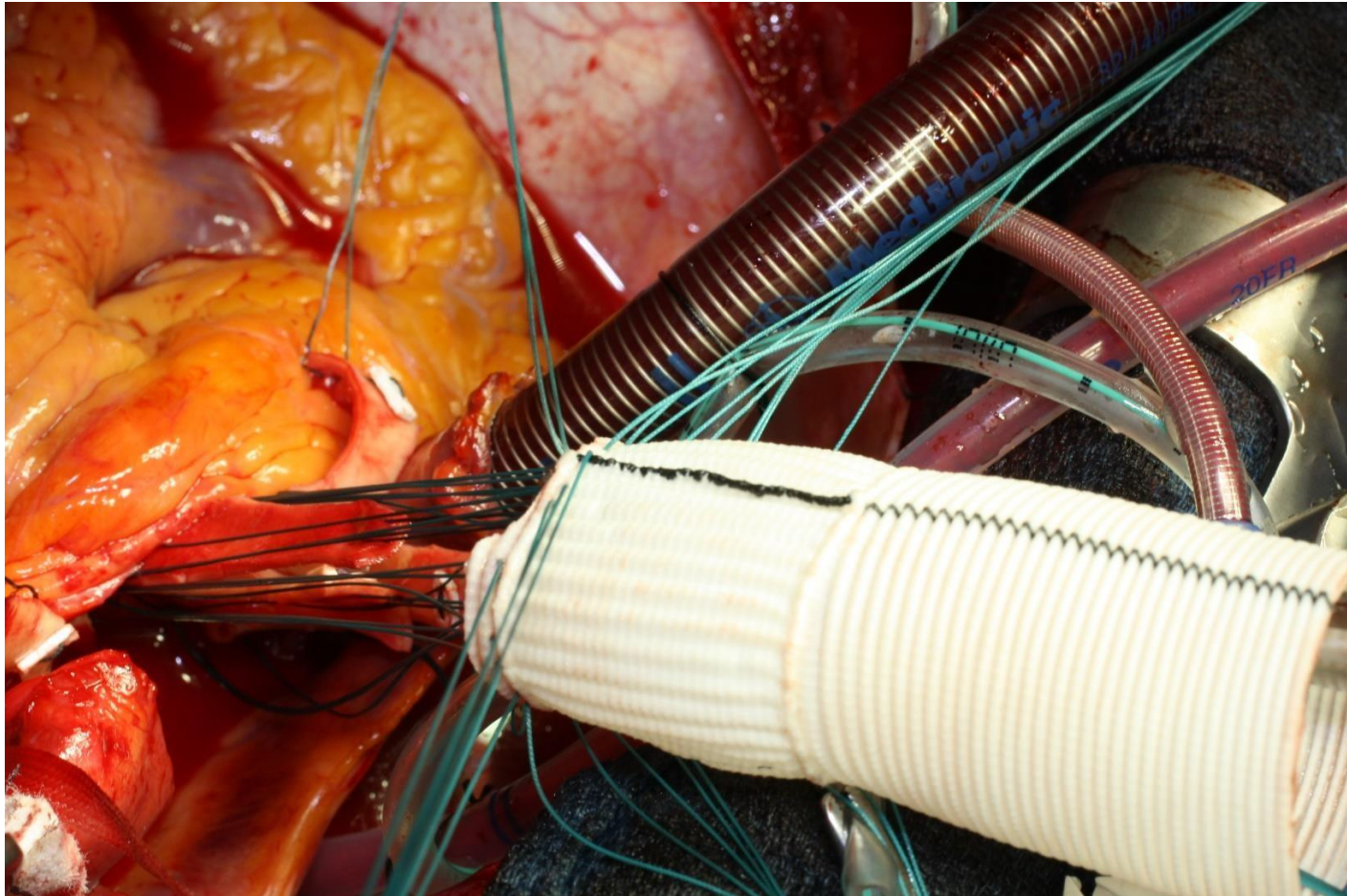
- Leaflets assessed for pathology and suitability for repair
- Coronary buttons prepared
- Sinuses scalloped leaving 0.5cm rim of aortic tissue



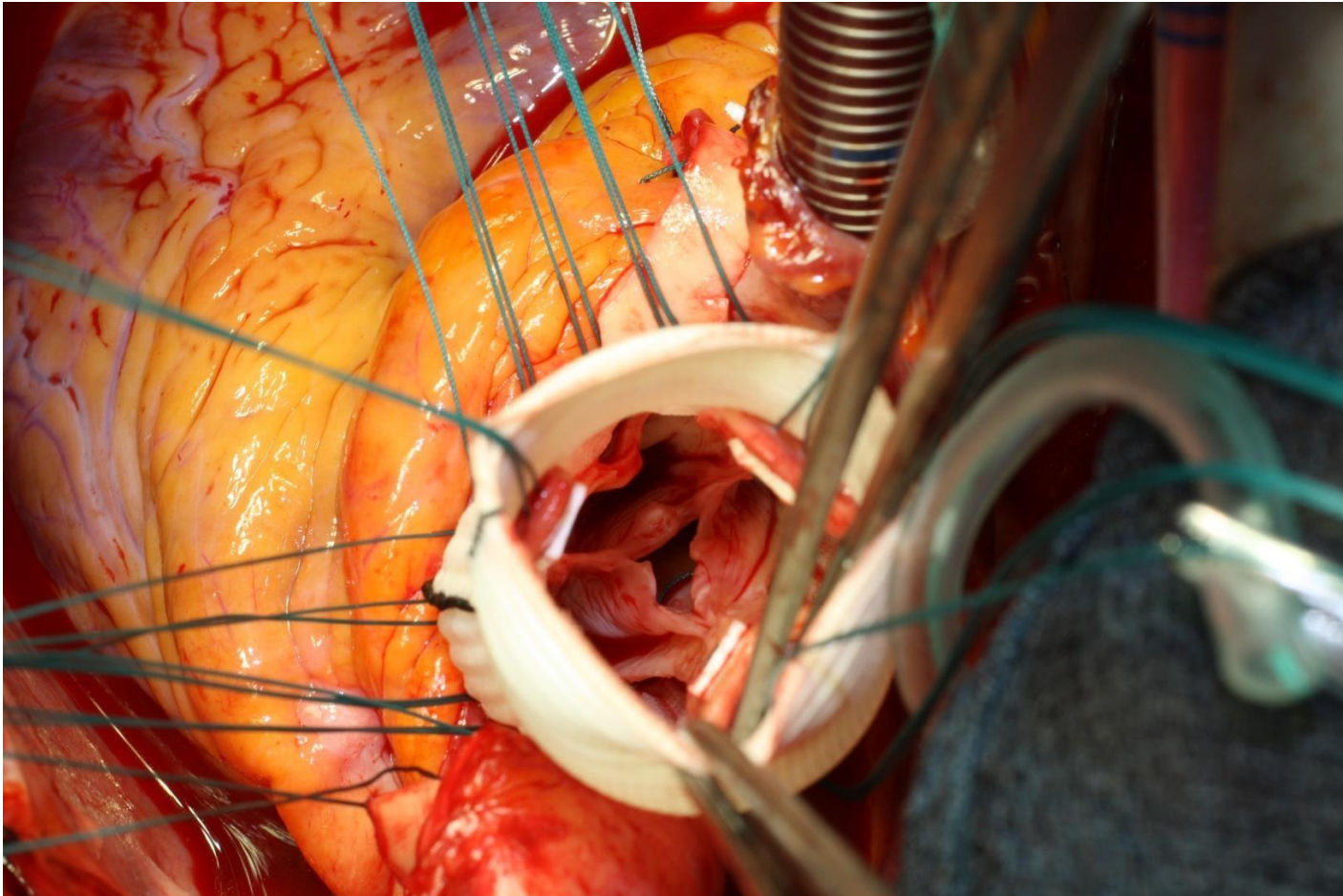
12 sutures placed below leaflets



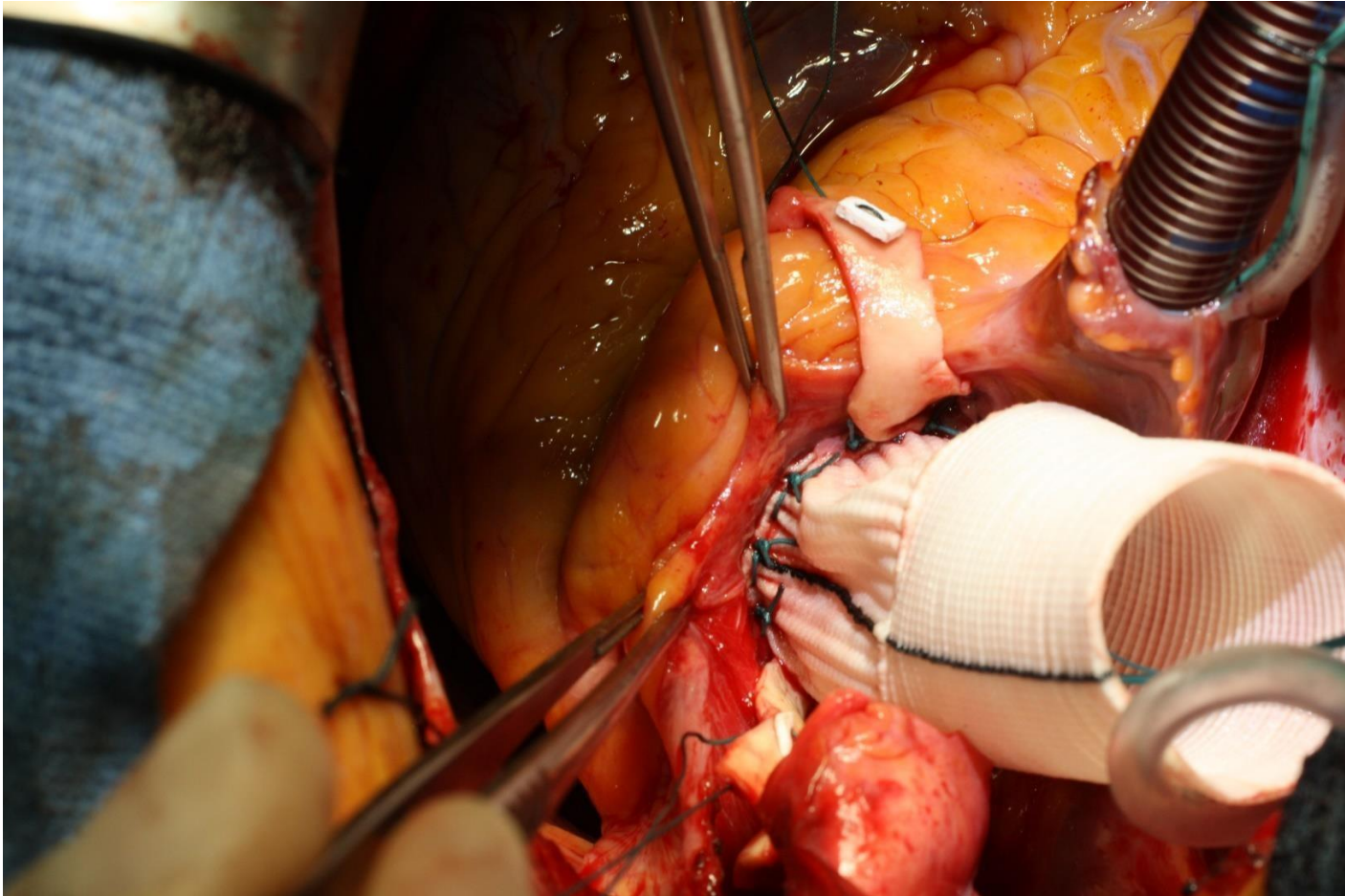
Valsalva graft parachuted around native valve



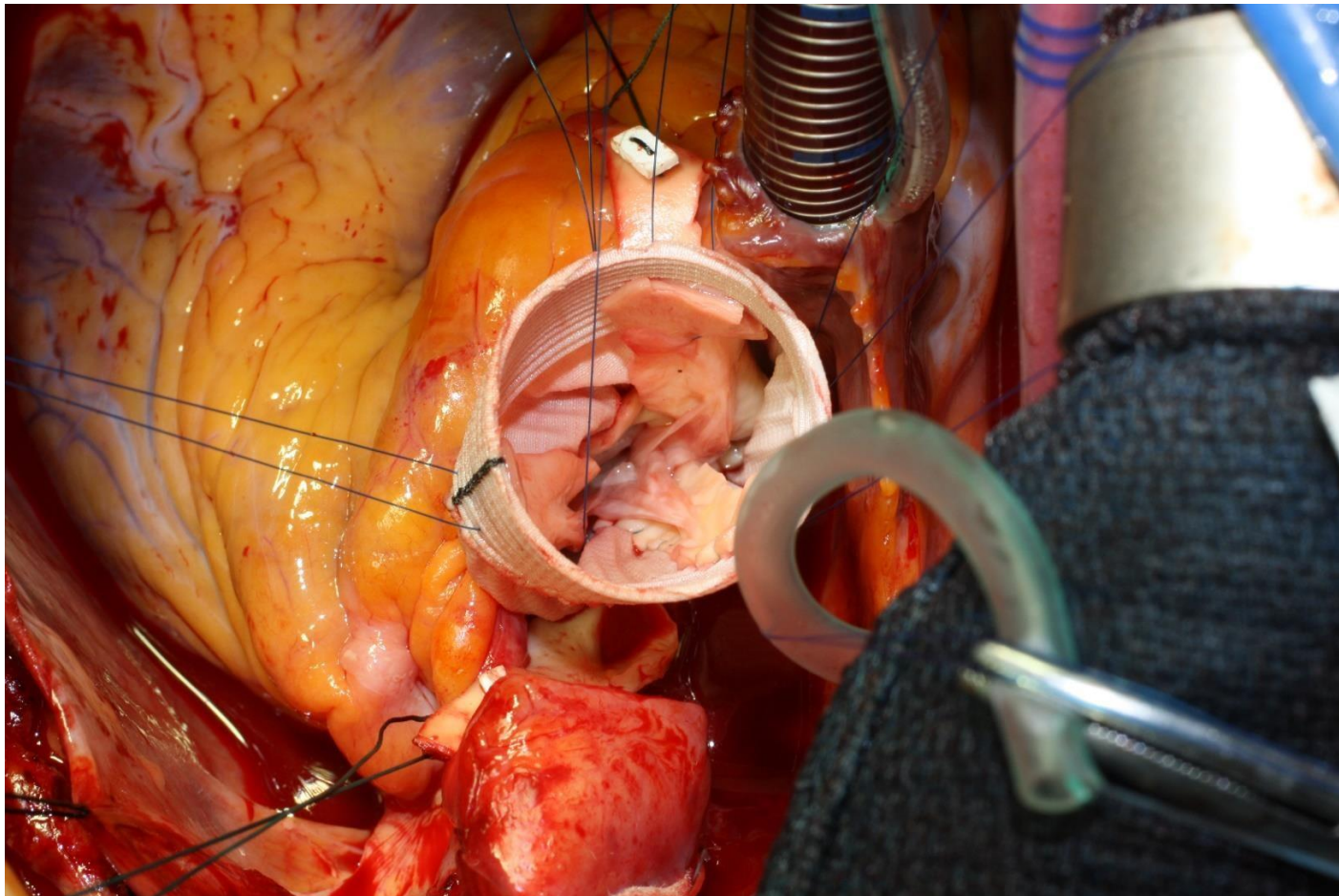
Assessment of root construct



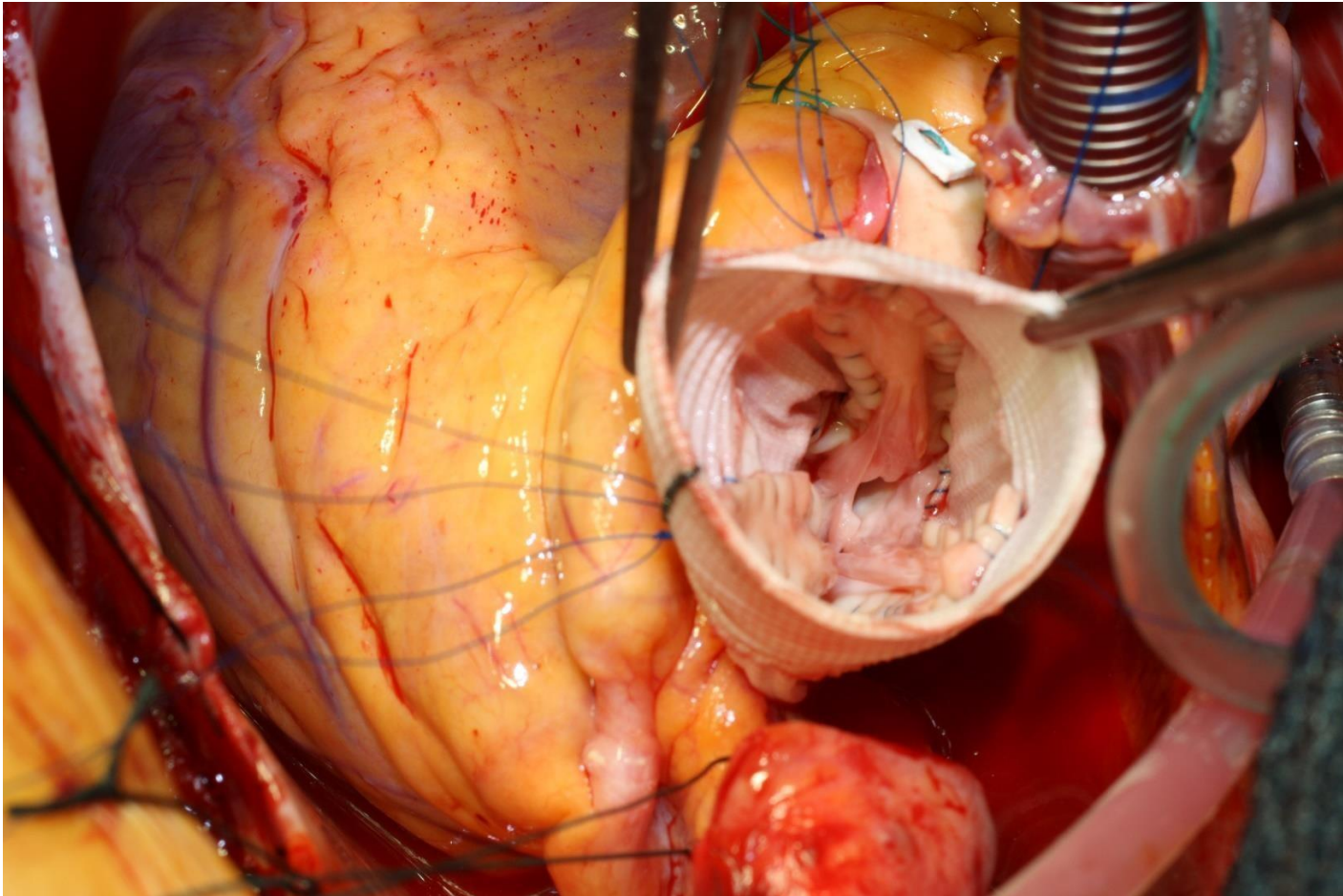
Graft tied down



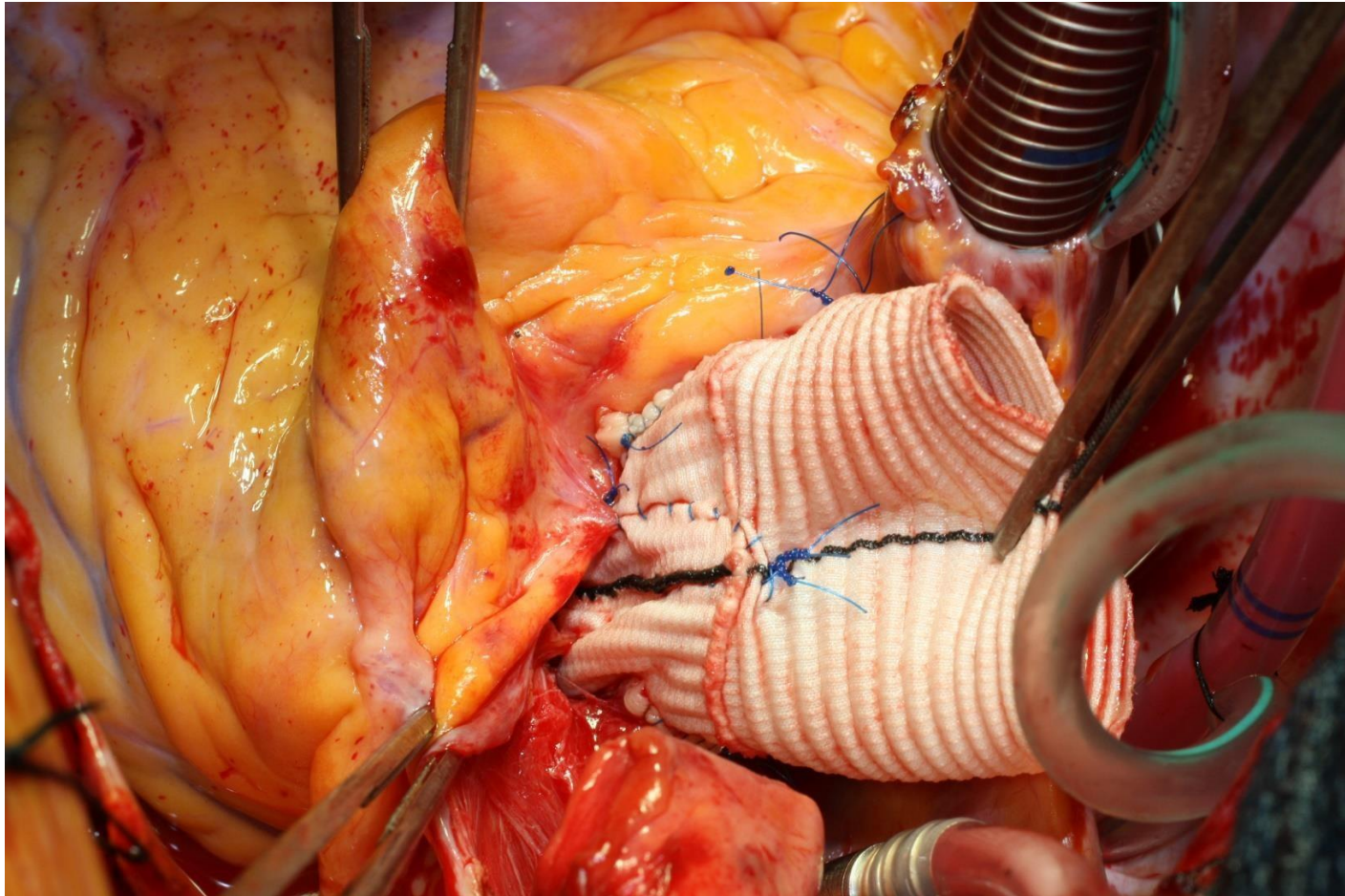
6 4/0 Prolene sutures to secure root construct tied sequentially



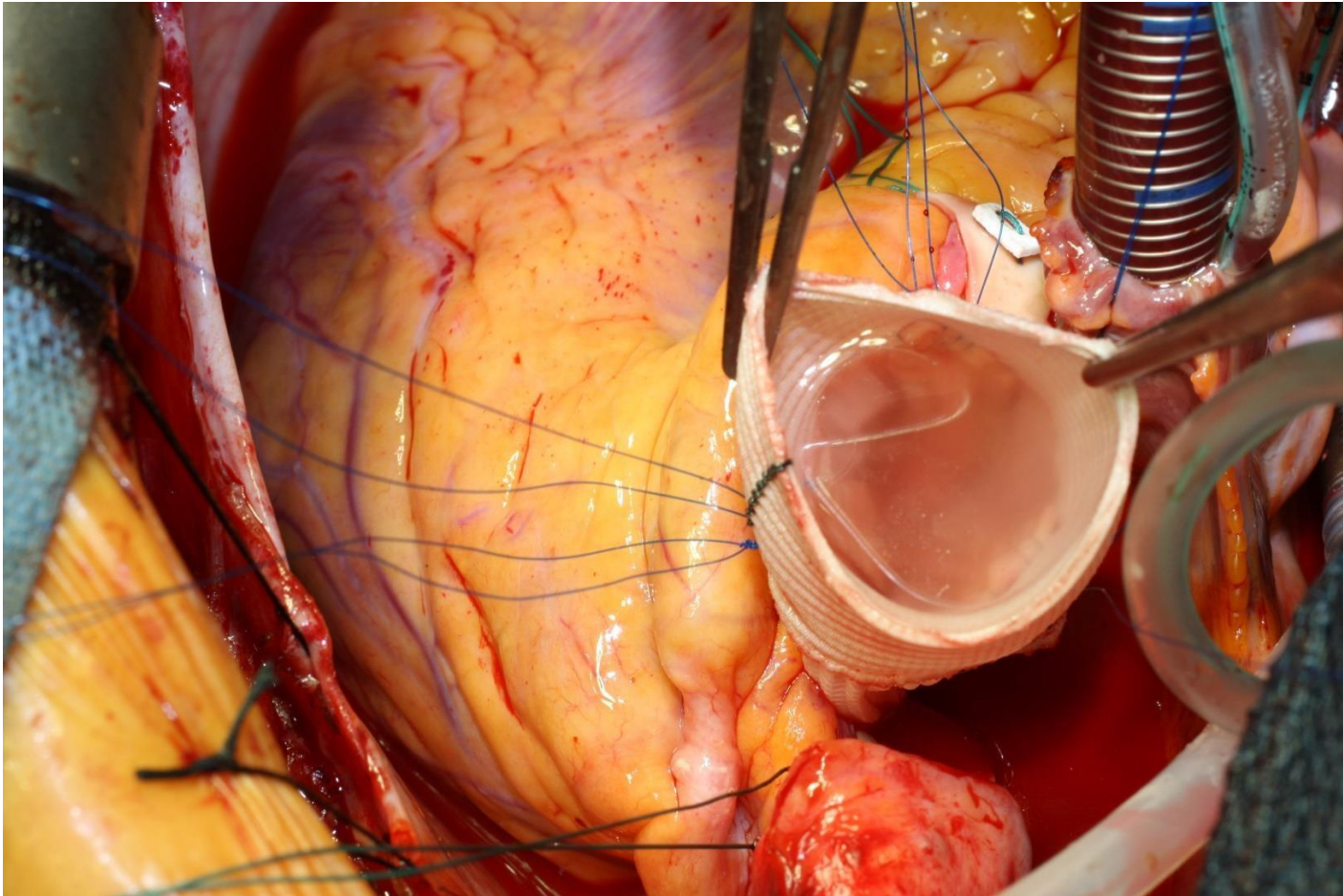
Completed repair of leaflets



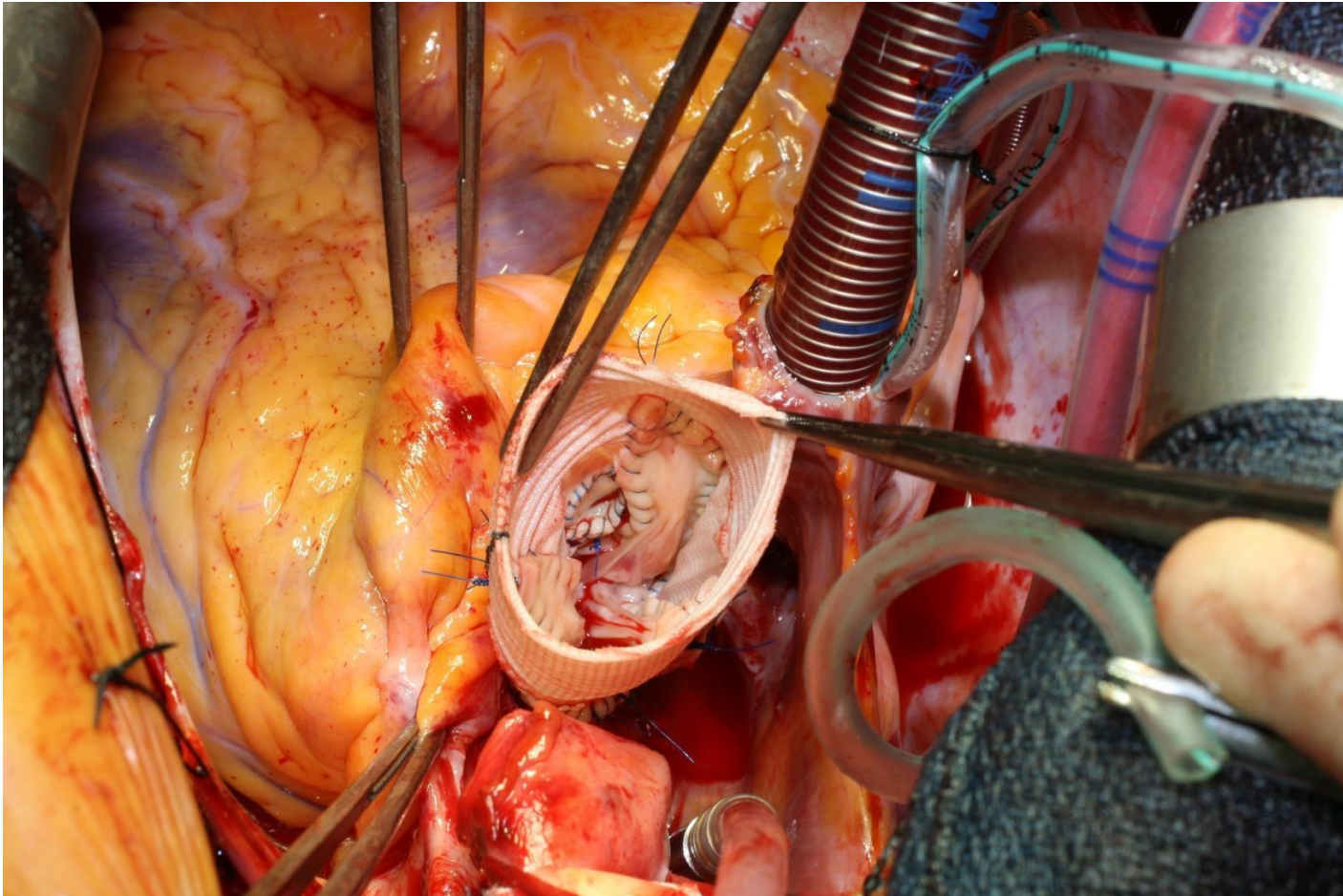
Depth of bites on graft



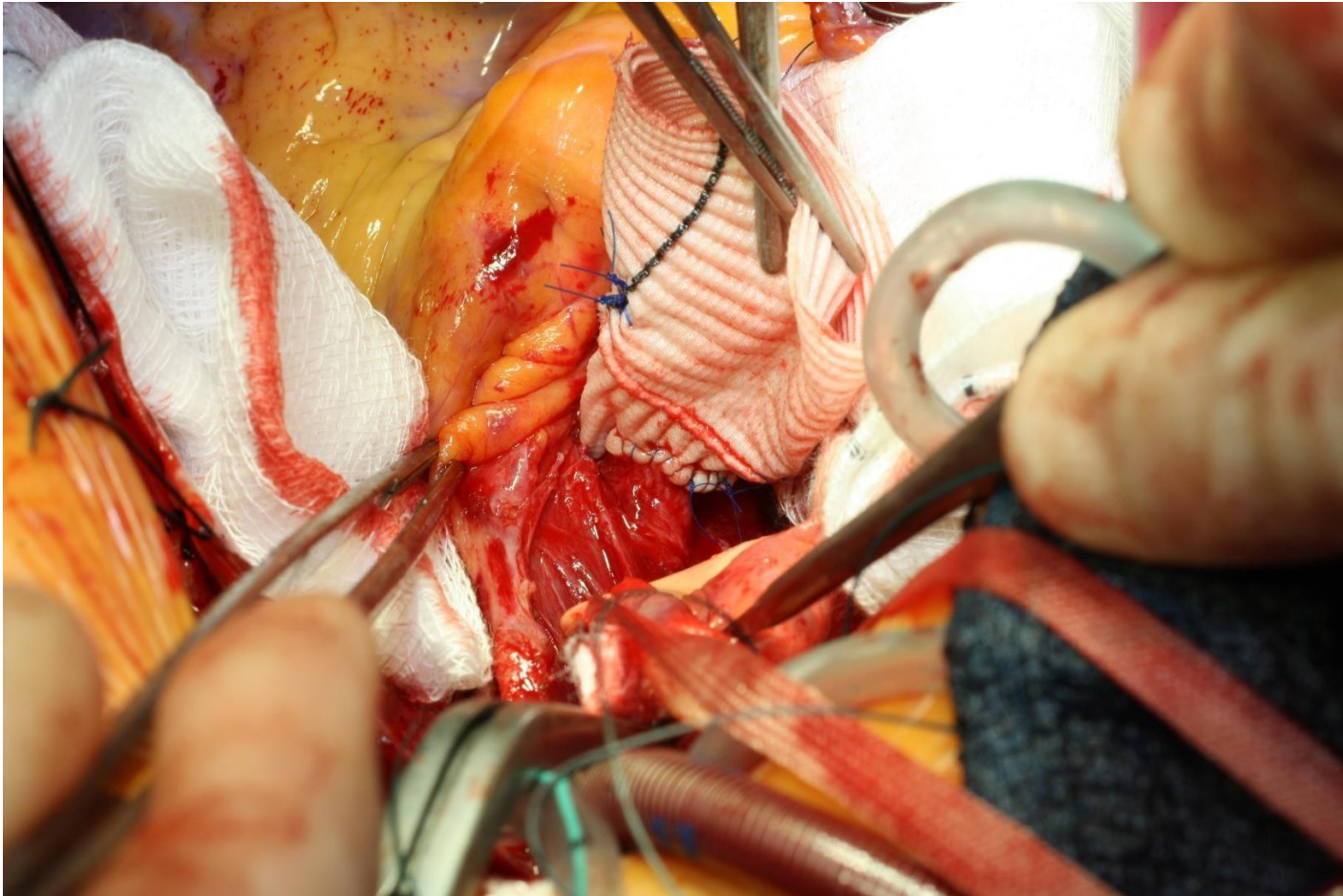
Water testing

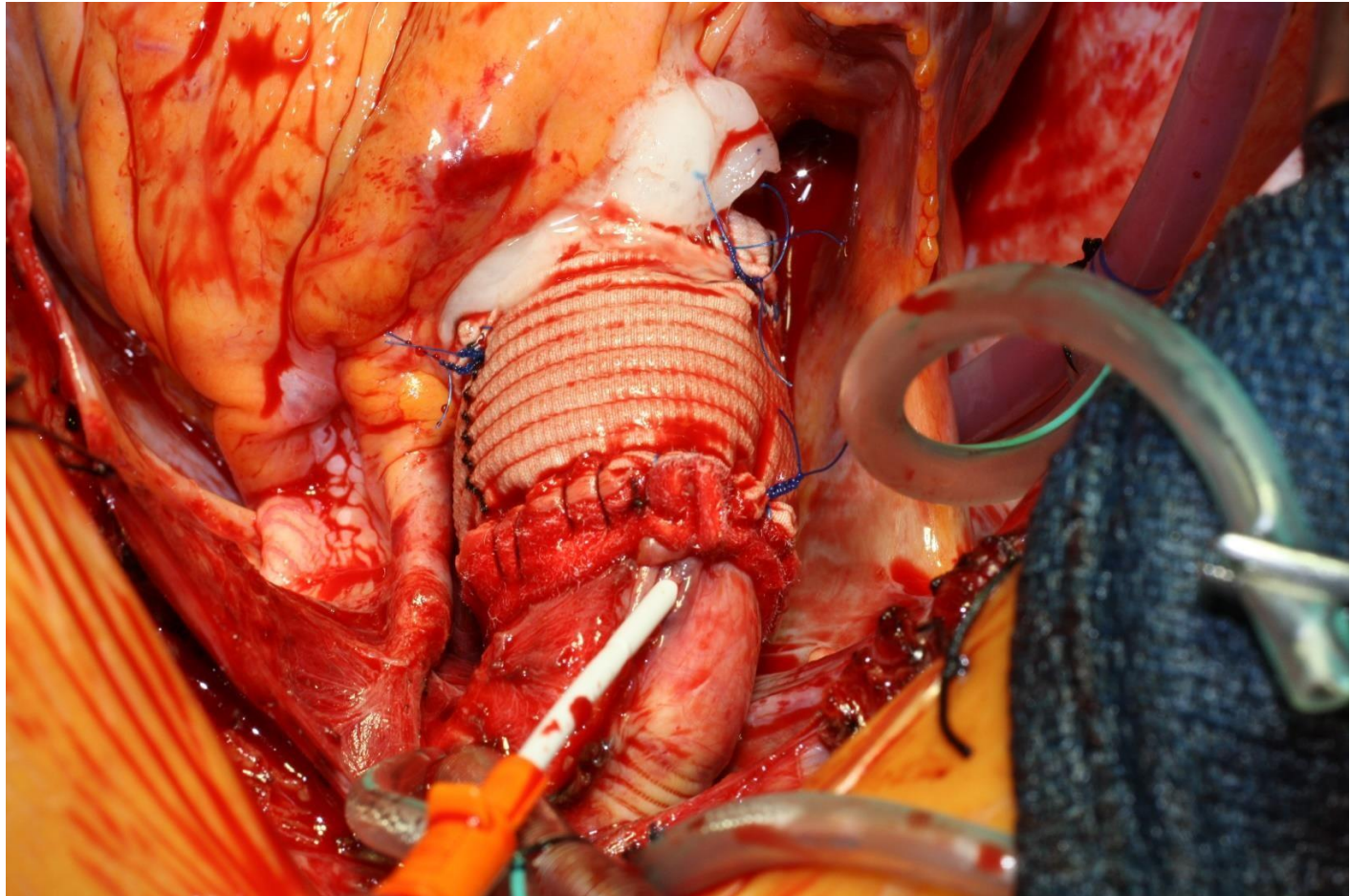


Coronary buttons



Coronary button





Sr:204
Im:1

[HA]

[AF]

[PH]

Vol.Render.
CONTRAST

[FP]

C1024
VW4095

