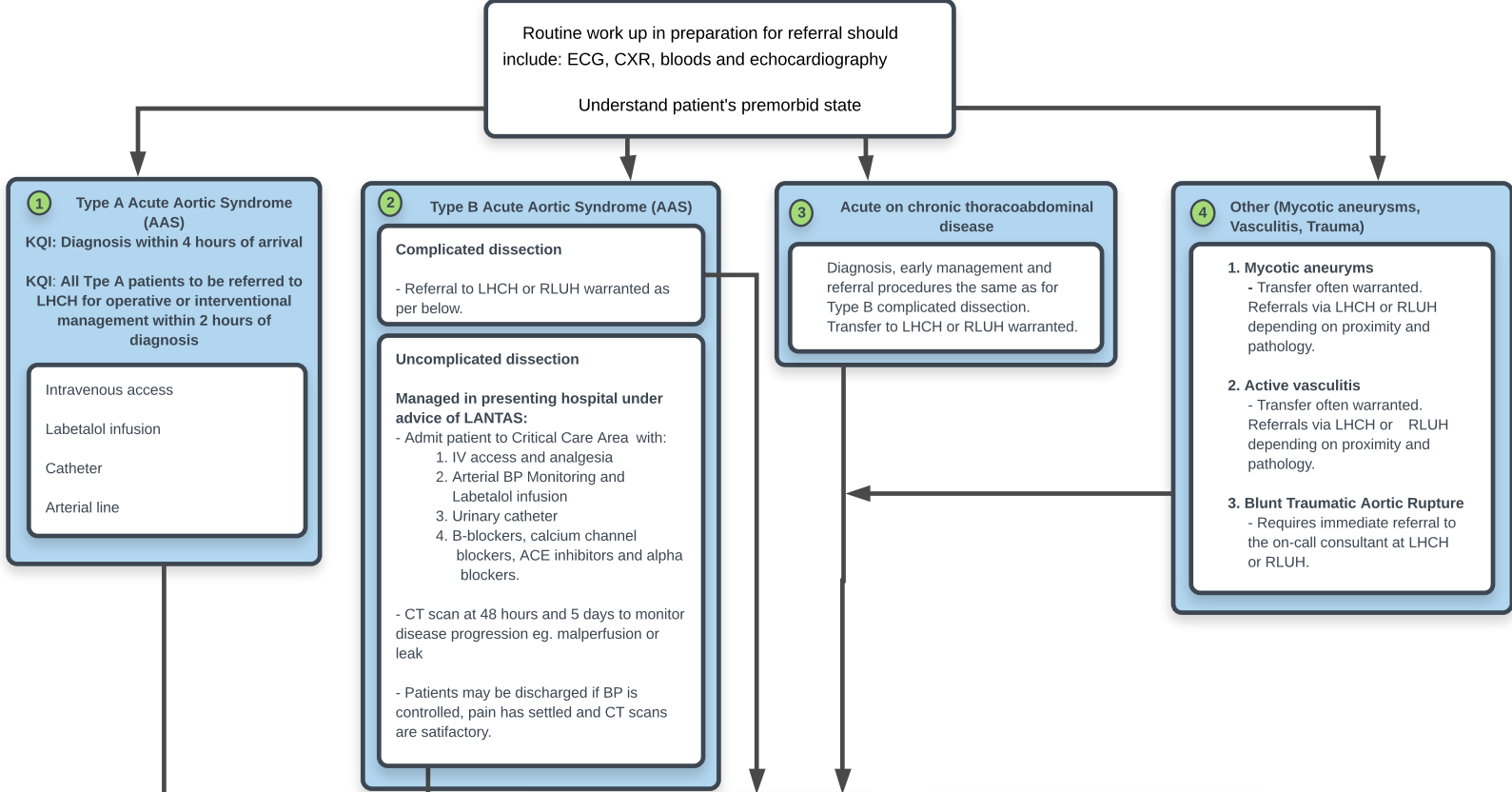


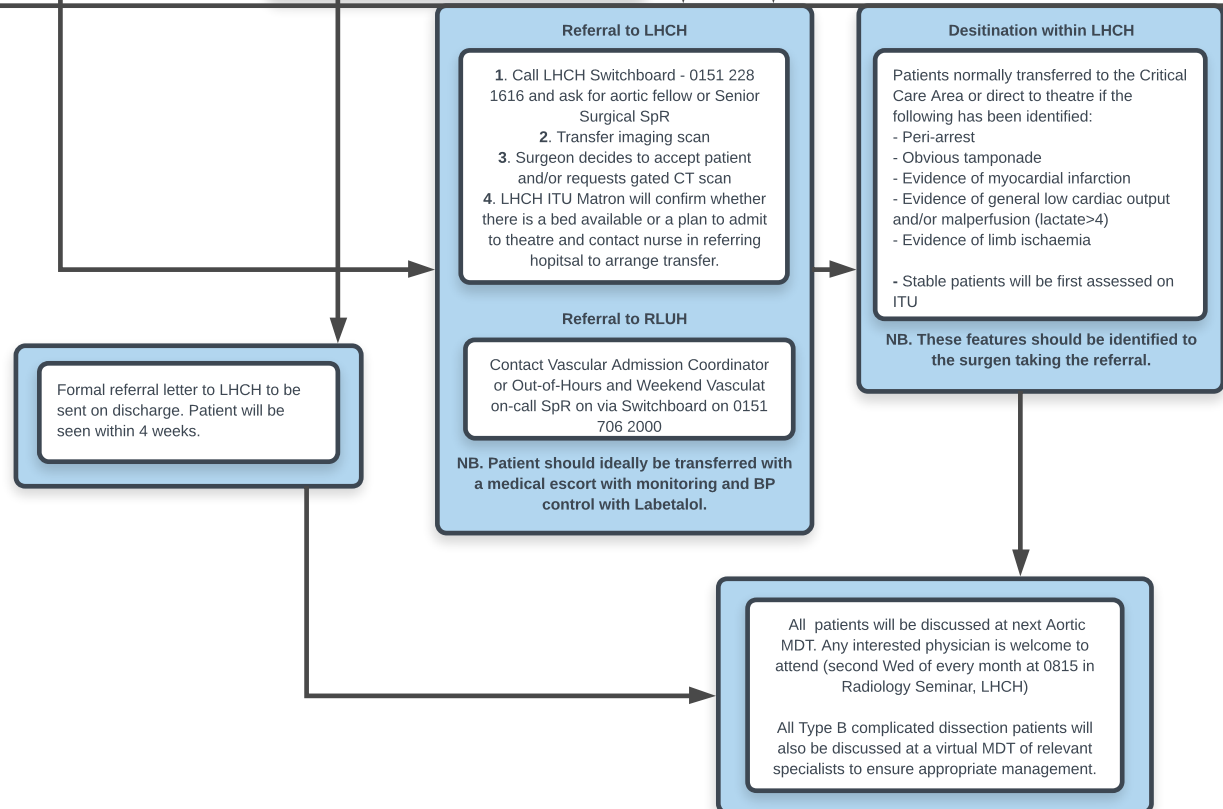
STEP 1
Presentation, Clinical
Assessment and
Diagnosis

Acute Aortic Syndrome
Suspect in any patients presenting with chest pain and/or
features suggesting malperfusion
Diagnosis ideally based on Gated, contrast enhanced, CT aorta

STEP 2
Early management and
referral



STEP 3
Transfers and definitive
management



STEP 4
Transition to outpatient
managemnt and
disease surveillance

Ongoing medical management

All patients will be offered life long follow-up and referral to clinical genetics, where appropriate.