

Reference Number: FOI/LHCH/2017132
From: Private Individual
Date: 25 May 2017
Subject: IM&T system information

- Q1 Who is the Trust's current supplier for their Electronic Patient Record?
- A1 [Allscripts](#)
- Q2 What is the contract start and end date for the Electronic Patient Record?
- A2 [9.7.2012 to 9.7.2017](#)
- Q3 Who is the Trust's current supplier for your Patient Administration System?
- A3 [Silverlink](#)
- Q4 What is the contract start and end date for the Patient Administration System?
- A4 [October 2015 to October 2020](#)
- Q5 When are you due to start looking to re-procure your clinical systems?
- A5 [EPR – re-procurement process with Allscripts in progress](#)
[PAS - no date planned](#)
- Q6 Who supplies the Trust's integration system?
- A7 [E-Link and Mirth](#)
- Q7 Does the Trust outsource their IT?
- A7 [Yes](#)
- Q8 If the Trust does outsource their IT, who is the provider and what are your contract dates?
- A8 [Informatics Merseyside](#)
- Q9 Please supply a copy of the Trusts latest Informatics Strategy
- A9 [Currently awaiting approval at the end of June 2017](#)
- Q10 How regularly does the Trust review their Informatics Strategy?
- A10 [Every three years](#)
- Q11 Has the Trust developed a Digital Strategy?

A11 Digital Strategy forms part of the Informatics Strategy

Q12 How often does the Trust assess their Clinical Systems?

A12 Annual optimisation review of systems

Q13 Who is the Trust's current Chief Clinical Information Officer

A13 Our Medical Director – see website for details:
<https://www.lhch.nhs.uk/about-lhch/our-board-of-directors/>

Q14 Which member of the board is responsible for IT?

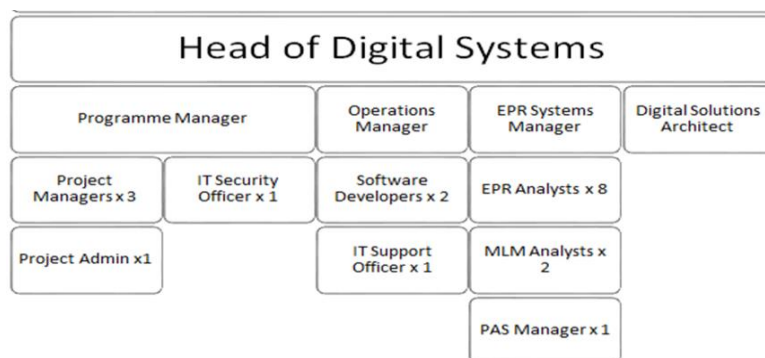
A14 Our Director of Research and Informatics – see website for details:
<https://www.lhch.nhs.uk/about-lhch/our-board-of-directors/>

Q15 As part of planning for the replacement of PAS how much has your organisation assigned a specifically for data migration to offset the risks to revenue generation post go-live of the new system?

A15 Information not held – not applicable

Q16 Please provide an organisation chart for your IM&T department

A16



Q17 Which member of the Trust is the SRO for the Local Digital Roadmap engagements?

A17 Our Director of Research and Informatics – see website for details:
<https://www.lhch.nhs.uk/about-lhch/our-board-of-directors/>

Q18 Who at the Trust is responsible for ensuring the changes to IR35 are being enforced?

A18 Our Head of Information