

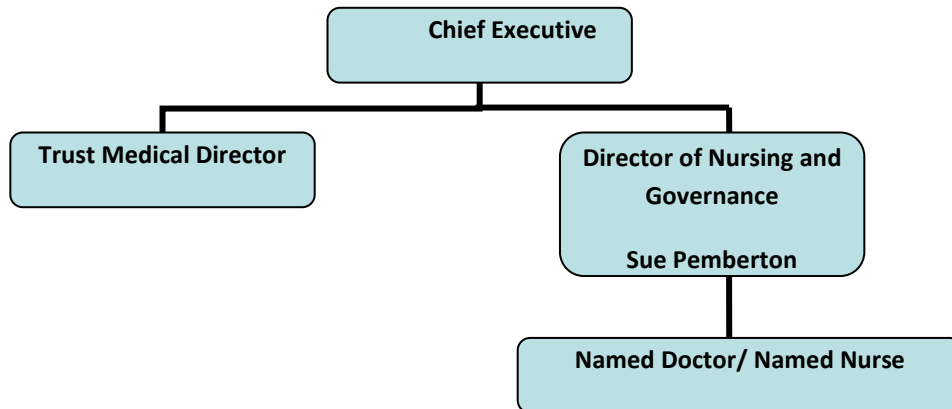
Safeguarding Children Declaration

Liverpool Heart and Chest Hospital NHS Foundation Trust (LHCH) is working hard to ensure that all patients, including children, are cared for in a safe, secure and caring environment. As a result, a number of safeguarding children arrangements are in place.

These include:

- LHCH meets the (NHS) statutory requirements in relation to Criminal Records Bureau (CRB) checks. All staff employed at the Trust undergo a CRB check prior to employment, and those working with children undergo an enhanced level of assessment.
- Outcome 7 - Safeguarding people who use services from abuse was reviewed during an unannounced inspection by the Care Quality Commission in August 2012. The report rated the organisation as 'Outstanding'
- The Trust Child Protection Policies and systems are on the hospital intranet and these are reviewed regularly
- The Trust has a process in place for following up children who miss outpatient appointments (within any specialty) to ensure their care, and ultimately their health, is not affected in any way. In addition, the Trust has a system in place for identifying children for whom there are safeguarding concerns.
- All eligible staff have undertaken relevant safeguarding training and this is regularly reviewed to ensure it is up-to-date. The Trust has a robust training strategy in place with regard to delivering safeguarding training. We offer Levels 1 and 2 and have arrangements for level 3 training to be provided to appropriate staff by NSPCC.
- The Trust has named professionals who lead on issues in relation to safeguarding. They are clear about their roles, have sufficient time and receive relevant support and training to undertake their roles, which include close contact with other social and health care organisations.

LHCH Safeguarding Accountability and Reporting Structure:



LHCH has a multiprofessional Safeguarding Steering Group who produces monthly updates for Trust Assurance Committees. Trust Board receives a Safeguarding Annual report to assure itself that its safeguarding systems and processes are working.

Sue Pemberton

.....

Sue Pemberton
Director of Nursing and Governance

Date: 7th October 2013